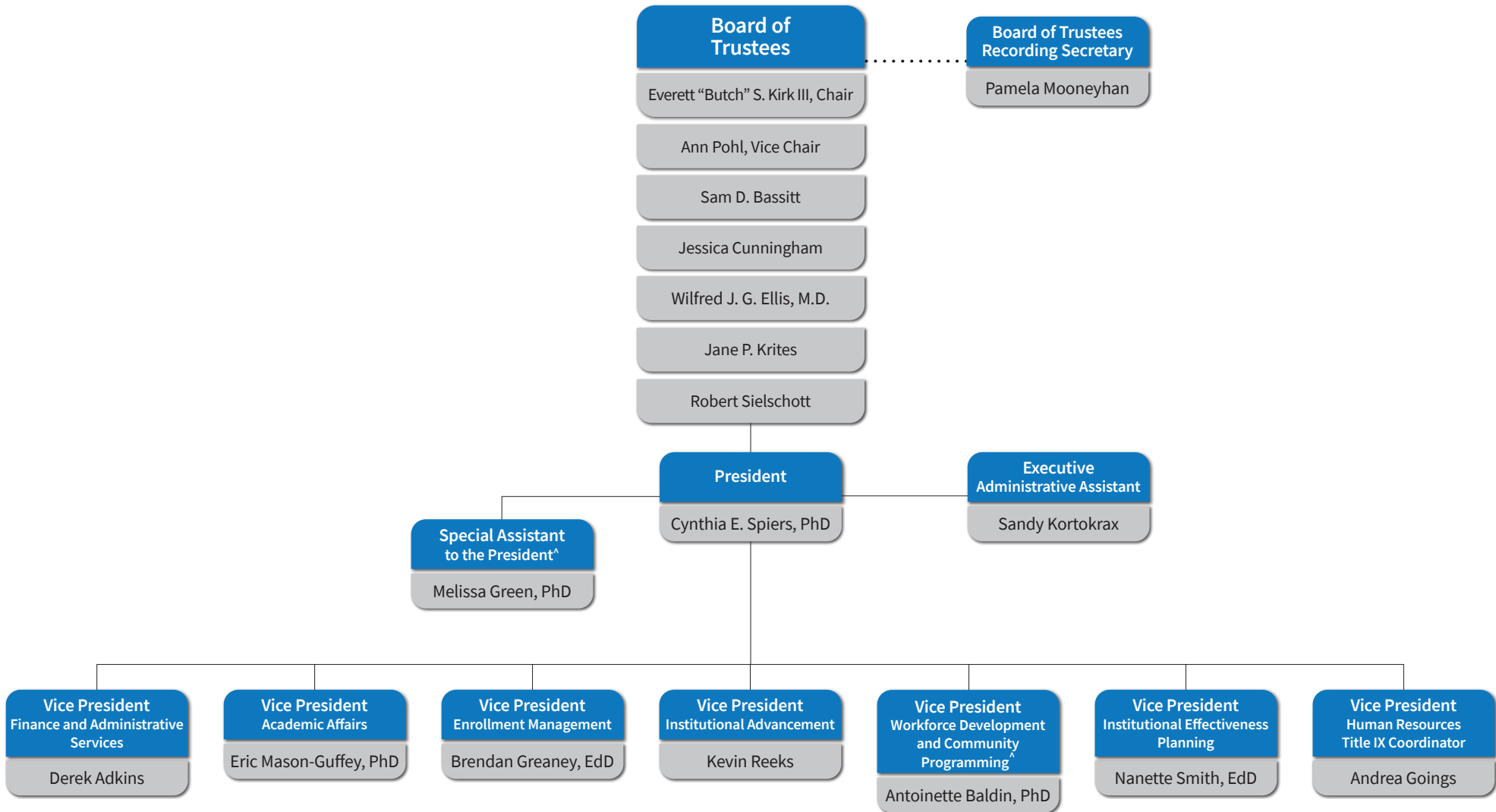
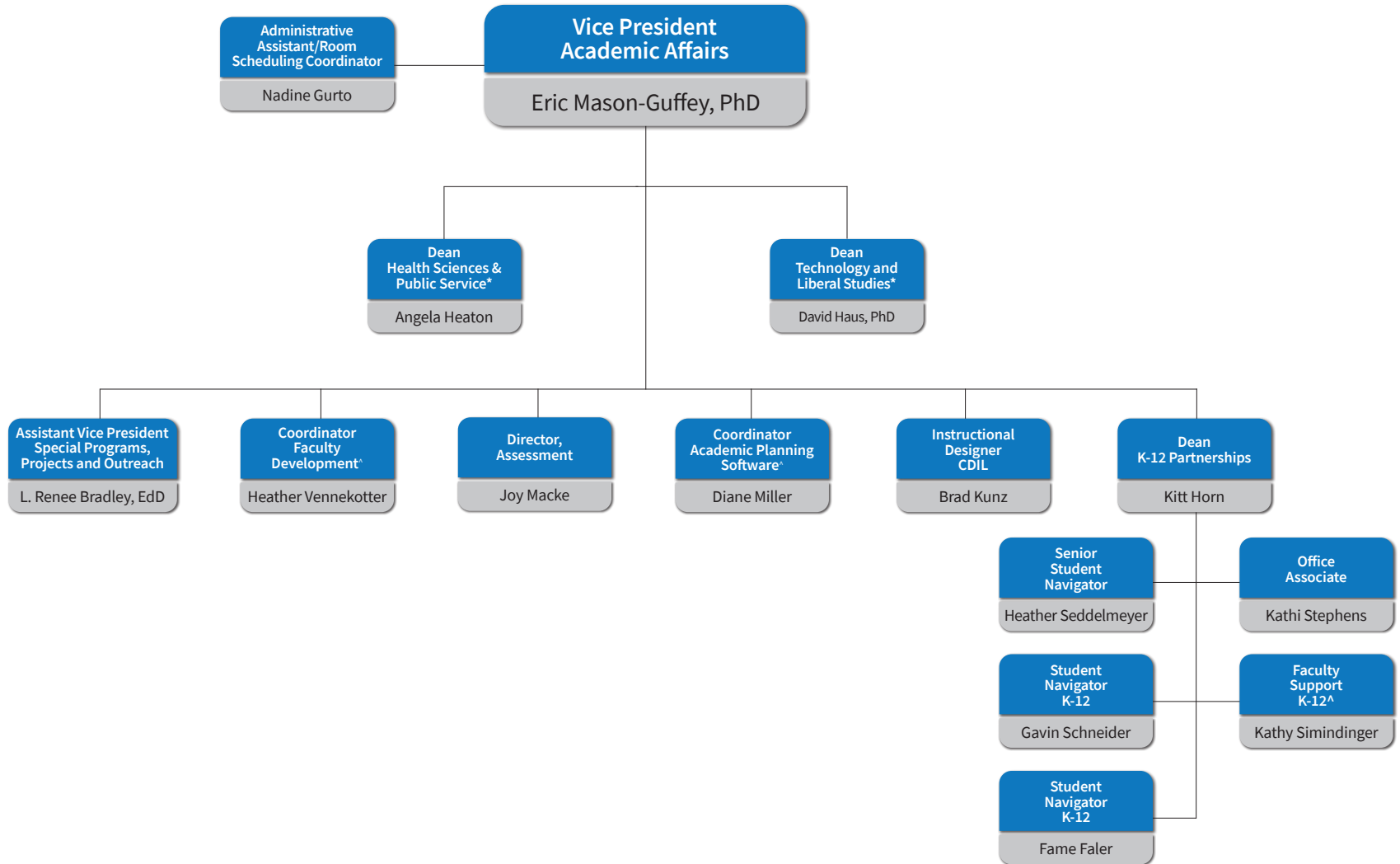


# OFFICE OF THE PRESIDENT



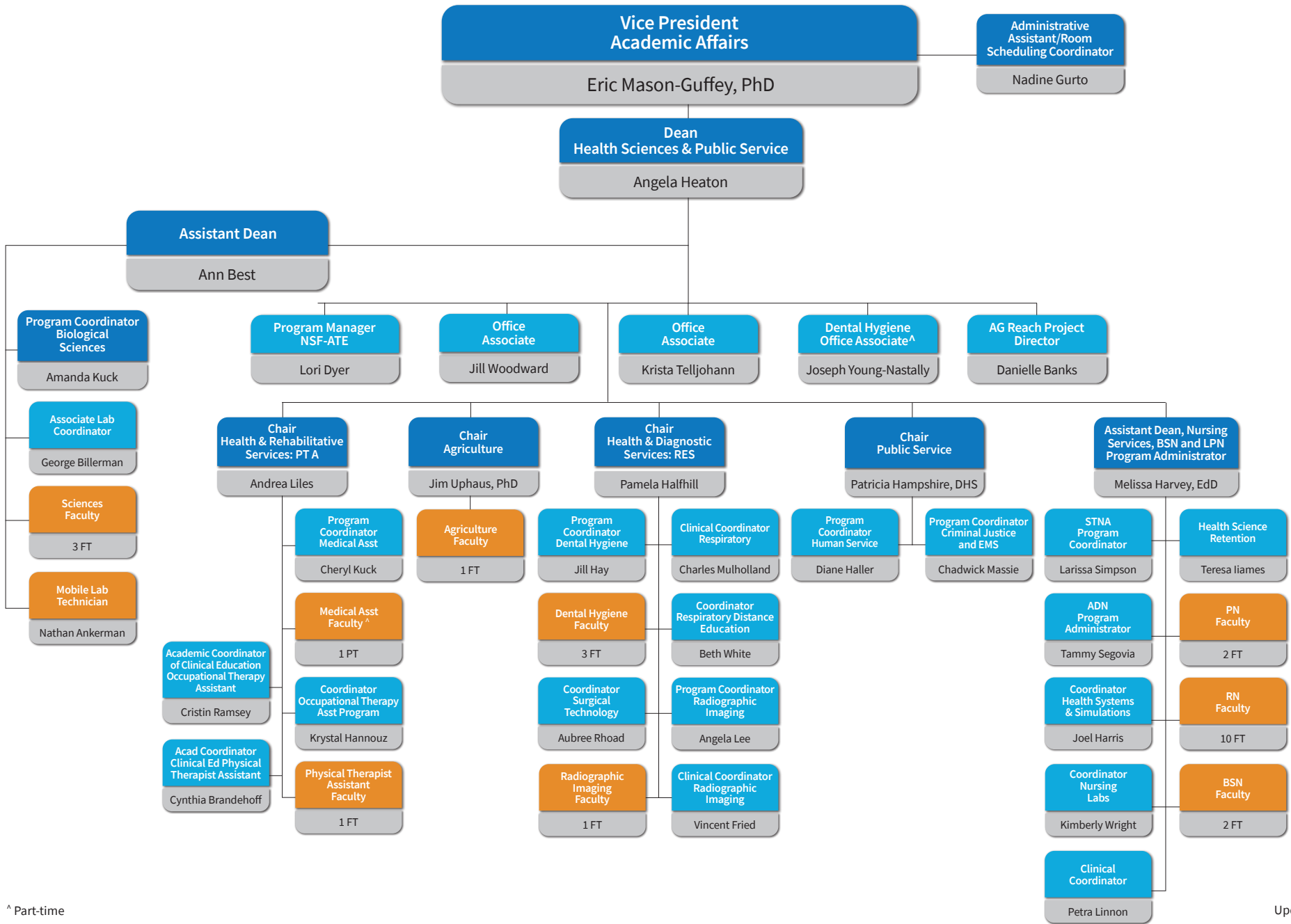
^ Part-time



^ Part-time

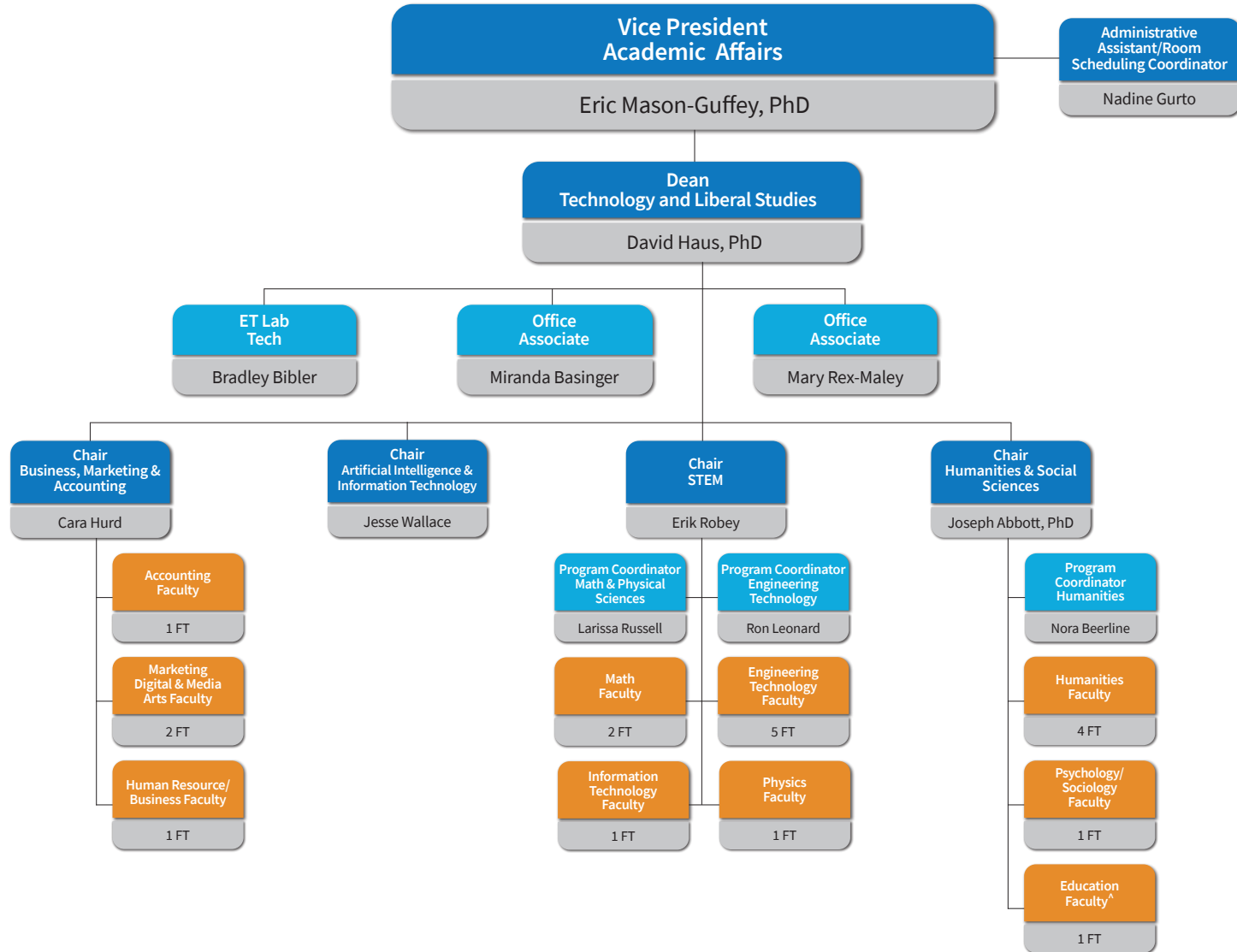
\* See detailed  
Division organizational chart

# HEALTH SCIENCES AND PUBLIC SERVICE

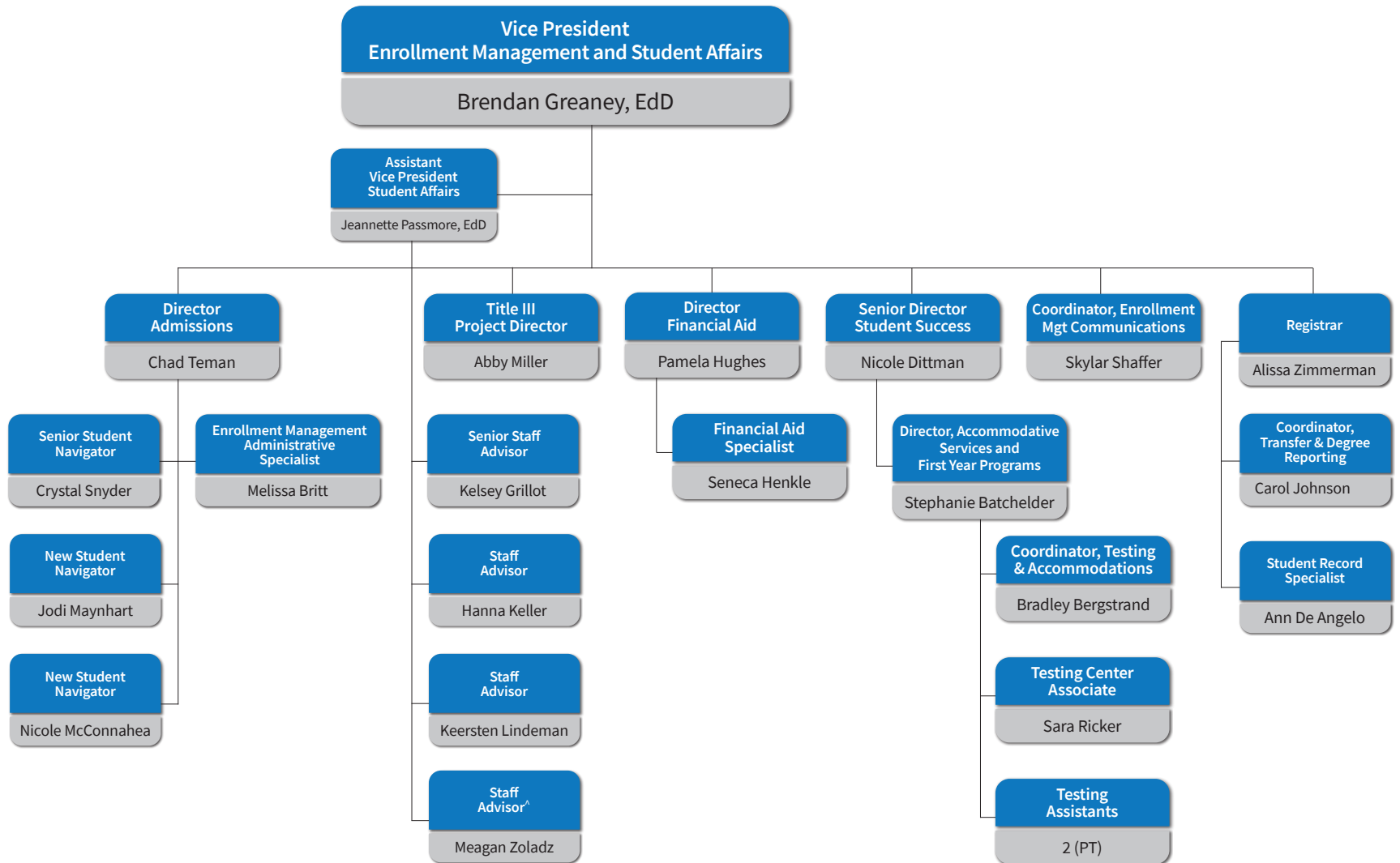


^ Part-time

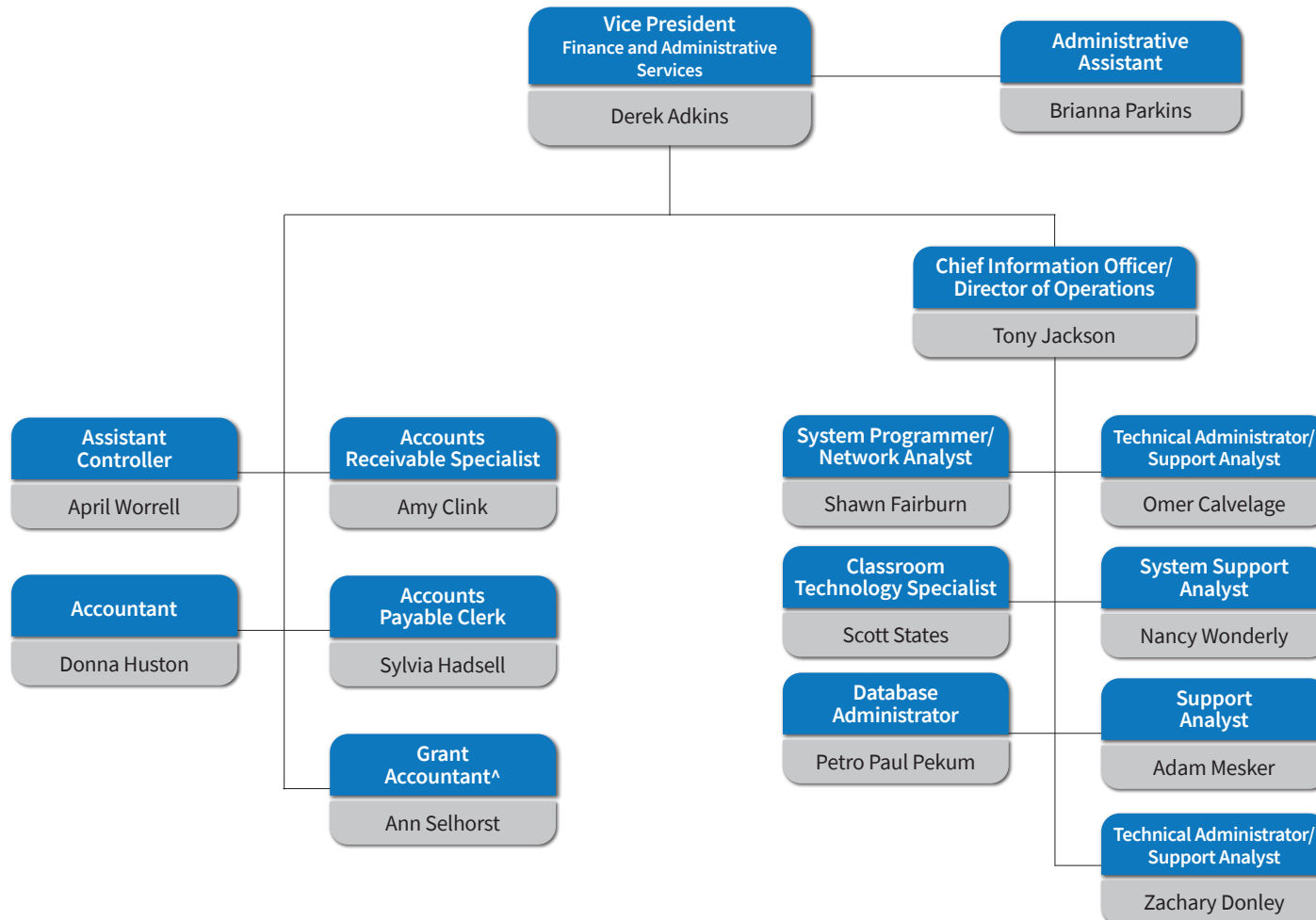
# TECHNOLOGY AND LIBERAL STUDIES



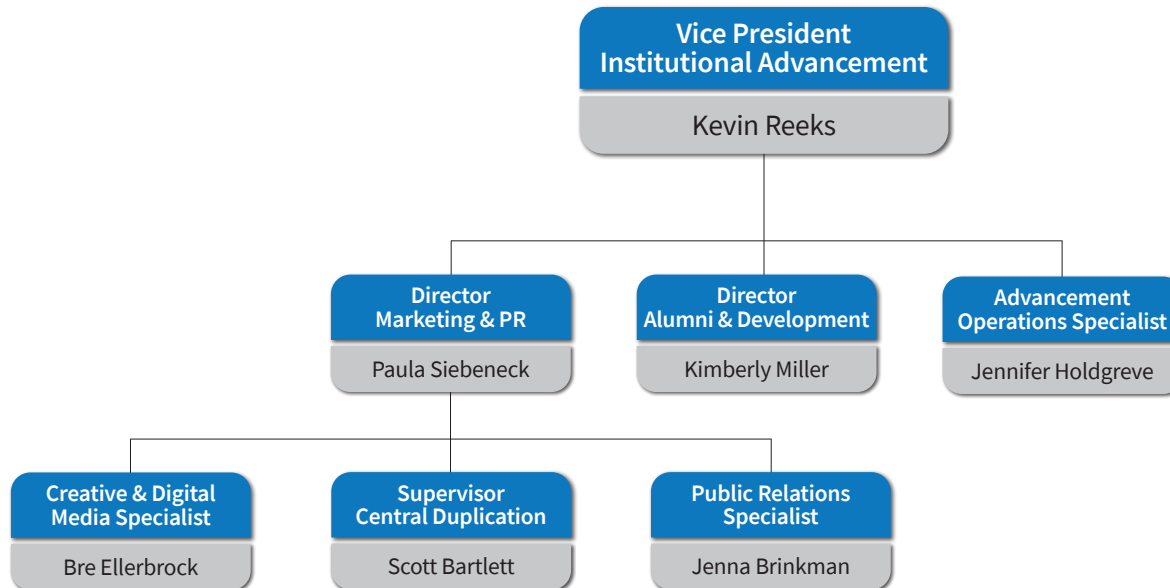
# ENROLLMENT MANAGEMENT AND STUDENT AFFAIRS



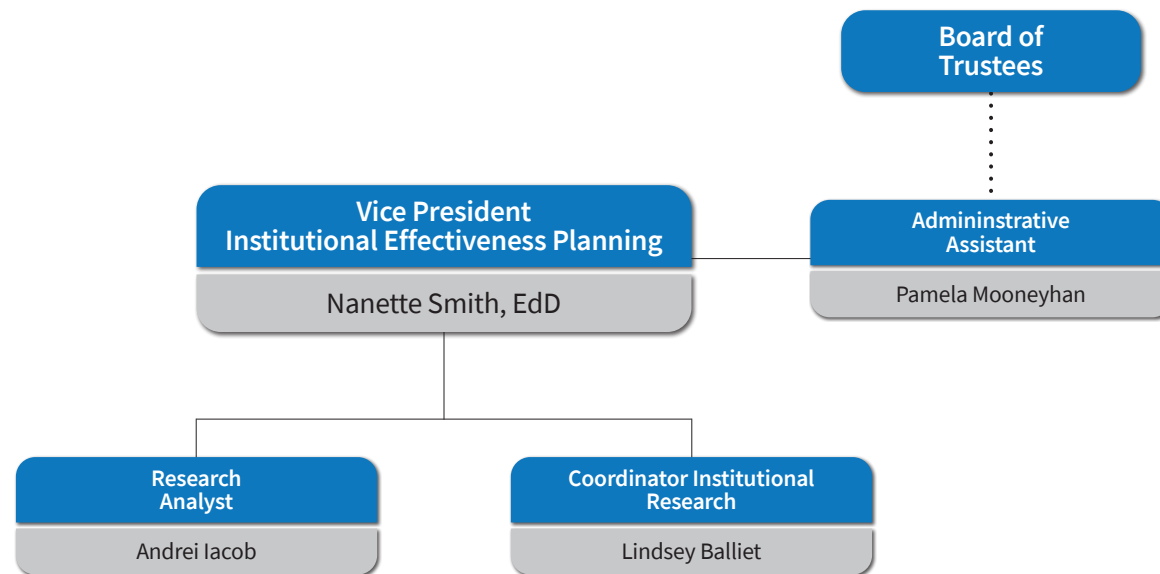
^ Part-time



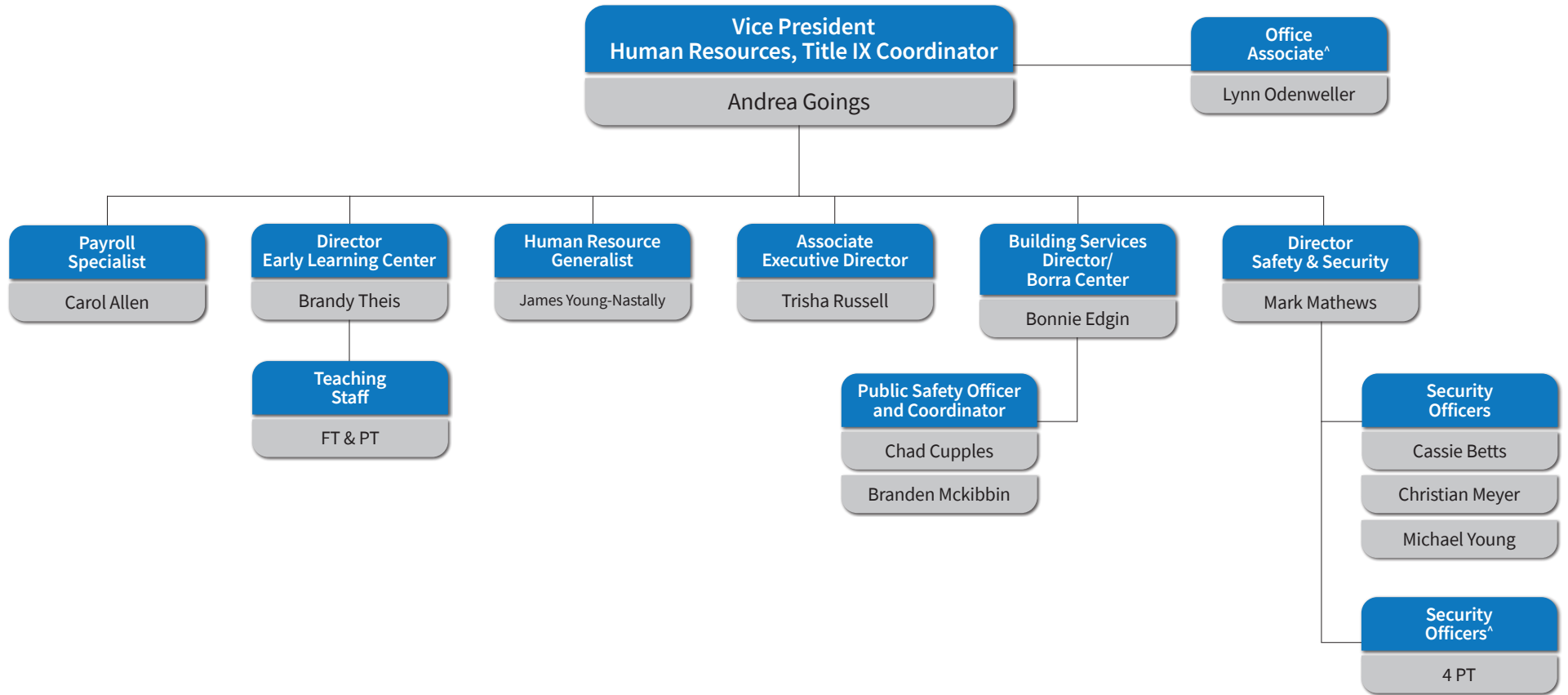
^ Part-time



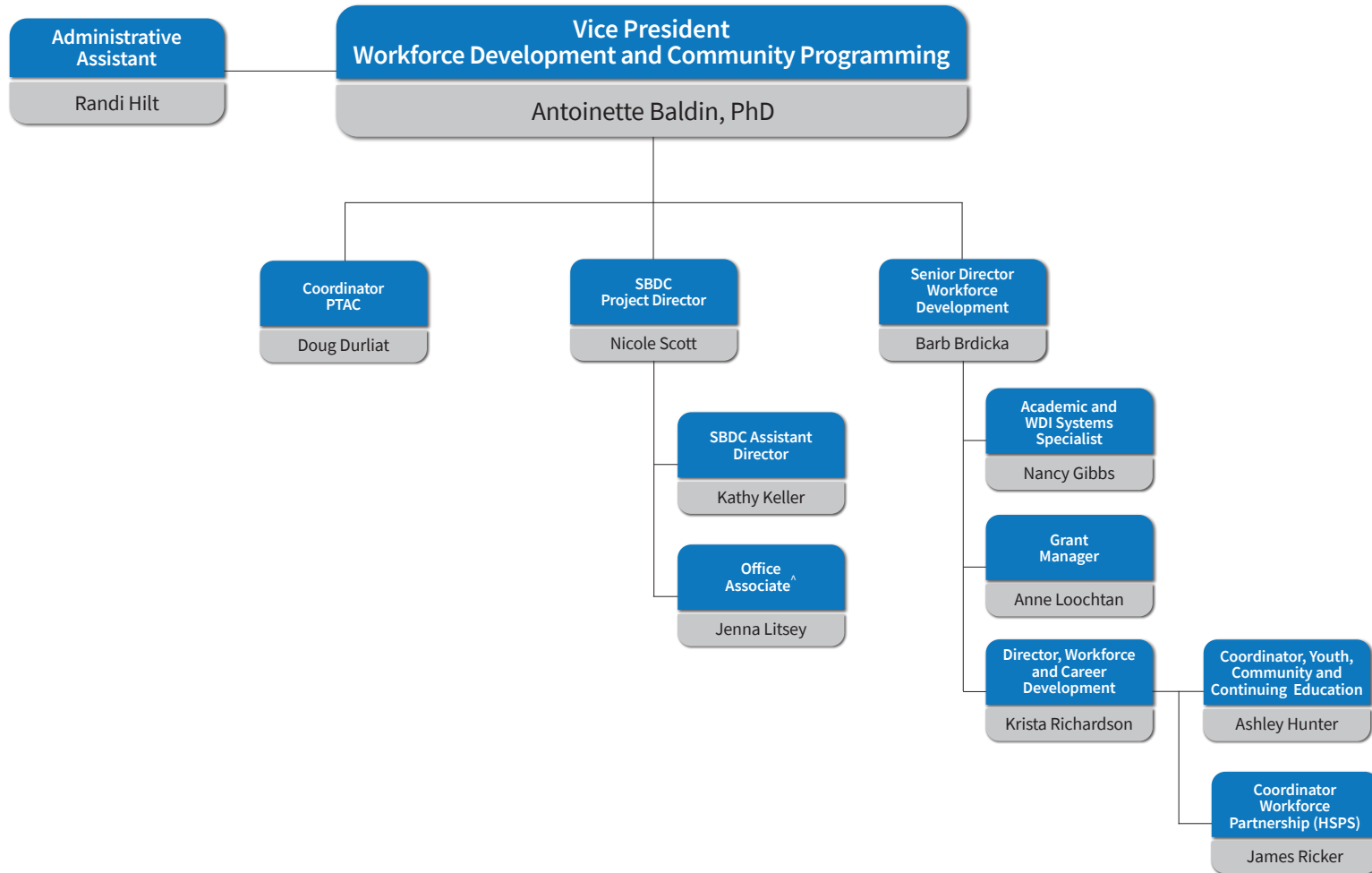
# INSTITUTIONAL EFFECTIVENESS PLANNING







^ Part-time



^ Part-time

\* See detailed  
Division organizational chart

